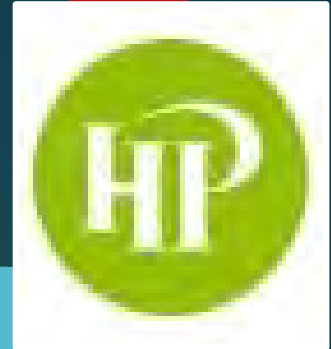


# SHERIDAN ROAD SIDEWALK PROJECT UPDATE



COMMITTEE OF THE WHOLE

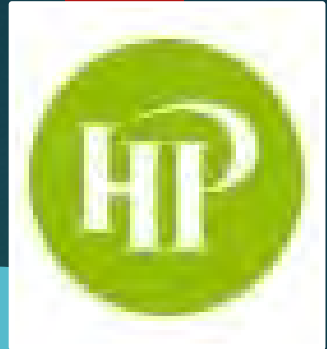
JUNE 12, 2017

# SHERIDAN ROAD SIDEWALK PROJECT UPDATE

Open House Meetings

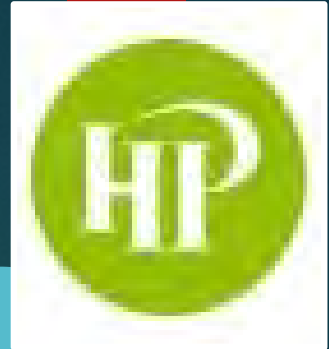
July 19, 2016 and May 23, 2017

- ❑ Community Interest (Safe Walkway)
- ❑ Conceptual Sketches Shown
- ❑ IDOT Permit Required
- ❑ 25 Households Attended (few attended both)
- ❑ Majority Living on Sheridan and Cary Ave
- ❑ Email Comments Received



# SHERIDAN ROAD SIDEWALK PROJECT UPDATE

## COMMUNITY INPUT



### ❑ July 2016 Open House & Emails

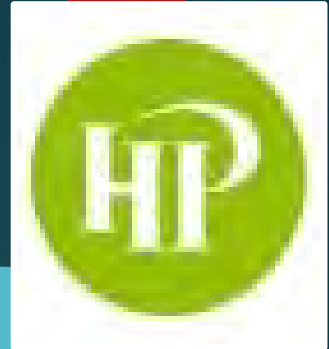
- ❑ 24 Comments Received \*\*
- ❑ 14 Support
- ❑ 10 Oppose

### ❑ May 2017 Open House & Emails

- ❑ 17 Comments Received \*\*
- ❑ 12 Support
- ❑ 5 Oppose

\*\* *Few Residents Attended Both Open Houses*

# SHERIDAN ROAD SIDEWALK PROJECT UPDATE



## PUBLIC FEEDBACK

### PROS

- ❑ Safety Improved
- ❑ Continuous Sidewalk
- ❑ Beach Access from North and South
- ❑ Safe Crosswalk

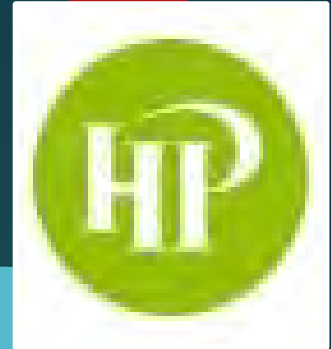
### CONS

- ❑ Excessive Tree Removals
- ❑ Retaining Walls
- ❑ ADA Access Down to Beach from Sheridan Road
- ❑ Privacy

# SHERIDAN ROAD SIDEWALK PROJECT UPDATE



# SHERIDAN ROAD SIDEWALK PROJECT UPDATE



SHERIDAN ROAD SIDEWALK WEST SIDE  
(May 2017 Open House)

# SHERIDAN ROAD SIDEWALK PROJECT UPDATE



Sidewalk on West Side

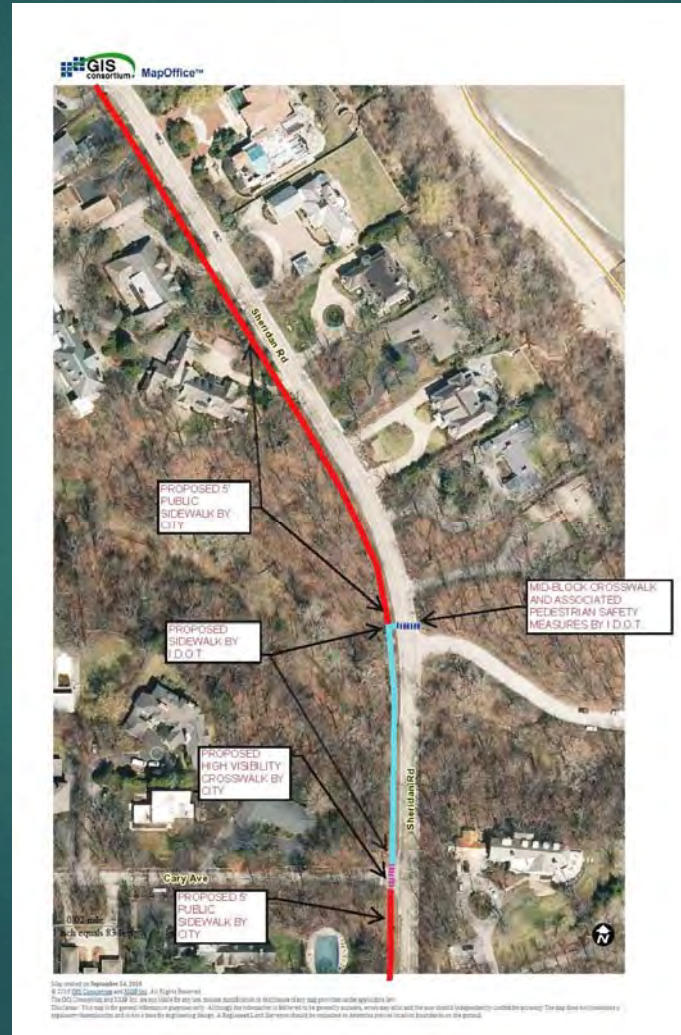


Map created on September 14, 2016  
© 2016 GIS Consortium and I.D.T. All Rights Reserved.  
The City, Consortium and I.D.T. are not liable for any use, misuse, modification or disclosure of any map generated from this application.  
Disclaimer: This map is for general information purposes only. Although the information is believed to be accurate, we do not warrant the use of this information without the necessary. The map is not intended to be used as a basis for engineering design. A Registered Land Surveyor should be consulted to determine precise location information on the ground.

# SHERIDAN ROAD SIDEWALK PROJECT UPDATE



Sidewalk on West Side



City created on November 04, 2019.  
© 2019 GIS Consortium and I.D.O.T. All Rights Reserved.  
The I.D.O.T. logo and text are the property of the Pennsylvania Department of Transportation. All other marks, names, acronyms or trademarks are the property of their respective owners.  
Disclaimer: This map is for general reference purposes only. Although the information contained herein is believed to be generally accurate, we do not warrant the accuracy or completeness of the information contained herein. The map does not constitute a representation or warranty of any kind by the Harrisburg Planning Department. A registered land surveyor should be consulted to determine precise locations described herein.



# SHERIDAN ROAD SIDEWALK PROJECT UPDATE



Sidewalk  
on West  
Side



**Junich Equus & Associates**  
© 2014 GIS Consortium and NCE Inc. All Rights Reserved.  
The GIS Consortium and NCE Inc. are not liable for any use, misuse, modification or disclosure of any map provided under applicable law.  
Disclaimer: This map is for general information purposes only. Although the information is believed to be generally accurate, errors may exist and the user should independently confirm for accuracy. The map does not constitute a regulatory determination and is not a basis for engineering design. A Registered Land Surveyor should be consulted to determine precise location boundaries on the ground.

# SHERIDAN ROAD SIDEWALK PROJECT UPDATE



## Sidewalk on West Side Tree Impacts



City of Highland Park

1150 Half Day Rd.  
Highland Park, Illinois 60035  
847.432.0807  
cityhpiil.com

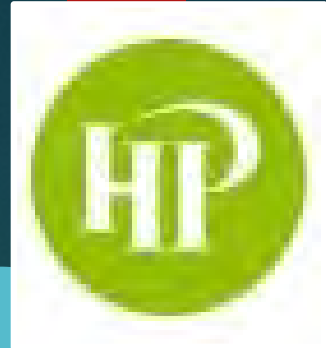
Public Works Department



There will also be significant impact to the existing landscaping at the following addresses: 750, 834, 950, and 970 Sheridan Road. See photos below.

# SHERIDAN ROAD SIDEWALK PROJECT UPDATE

## Sidewalk on West Side Tree Impacts



 City of Highland Park  
1150 Half Day Rd.  
Highland Park, Illinois 60035  
847.432.0807  
cityhpi.com

Public Works Department

750 Sheridan Road



# SHERIDAN ROAD SIDEWALK PROJECT UPDATE

## Sidewalk on West Side Tree Impacts



 City of Highland Park  
1150 Half Day Rd.  
Highland Park, Illinois 60035  
847.432.0807  
cityhpl.com

Public Works Department

834 Sheridan Road



950 Sheridan Road



# SHERIDAN ROAD SIDEWALK PROJECT UPDATE

## Sidewalk on West Side Tree Impacts



City of Highland Park

1150 Half Day Rd.  
Highland Park, Illinois 60035  
847.432.0807  
cityhpil.com

Public Works Department

970 Sheridan Road

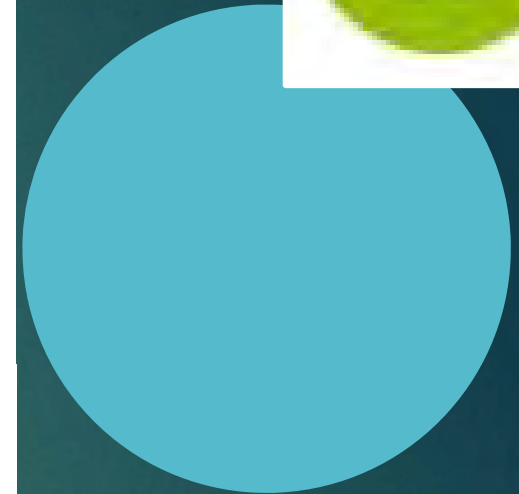


# SHERIDAN ROAD SIDEWALK PROJECT UPDATE

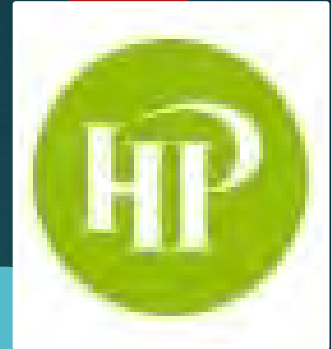
## Sidewalk on West Side Tree Impacts

### Sheridan Road Sidewalk Project Tree Impacts, West Side

Species	Quantity
Shagbark Hickory	1
Red Oak	2
White Oak	9
Crabapple	9
Scotch Pine	2
Blue Spruce	3
Norway Maple	4
Elm	1
Sugar Maple	1
Austrian Pine	1
Arborvitae	1
White Birch	1



# SHERIDAN ROAD SIDEWALK PROJECT UPDATE



SHERIDAN ROAD SIDEWALK EAST SIDE  
(July 2016 Open House)

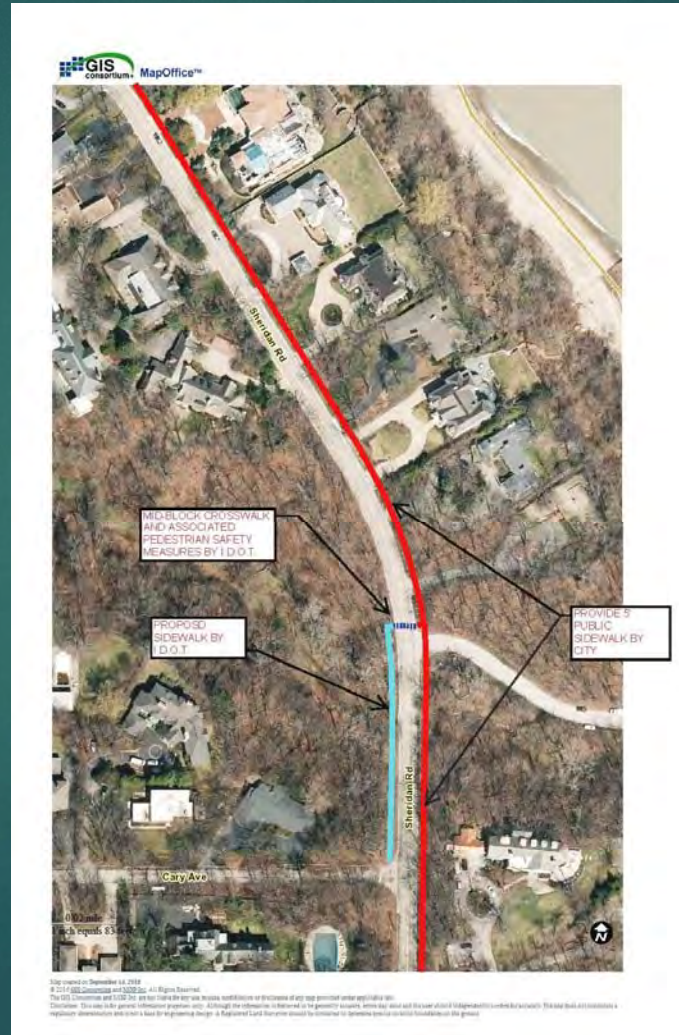
# SHERIDAN ROAD SIDEWALK PROJECT UPDATE



Sidewalk on East Side

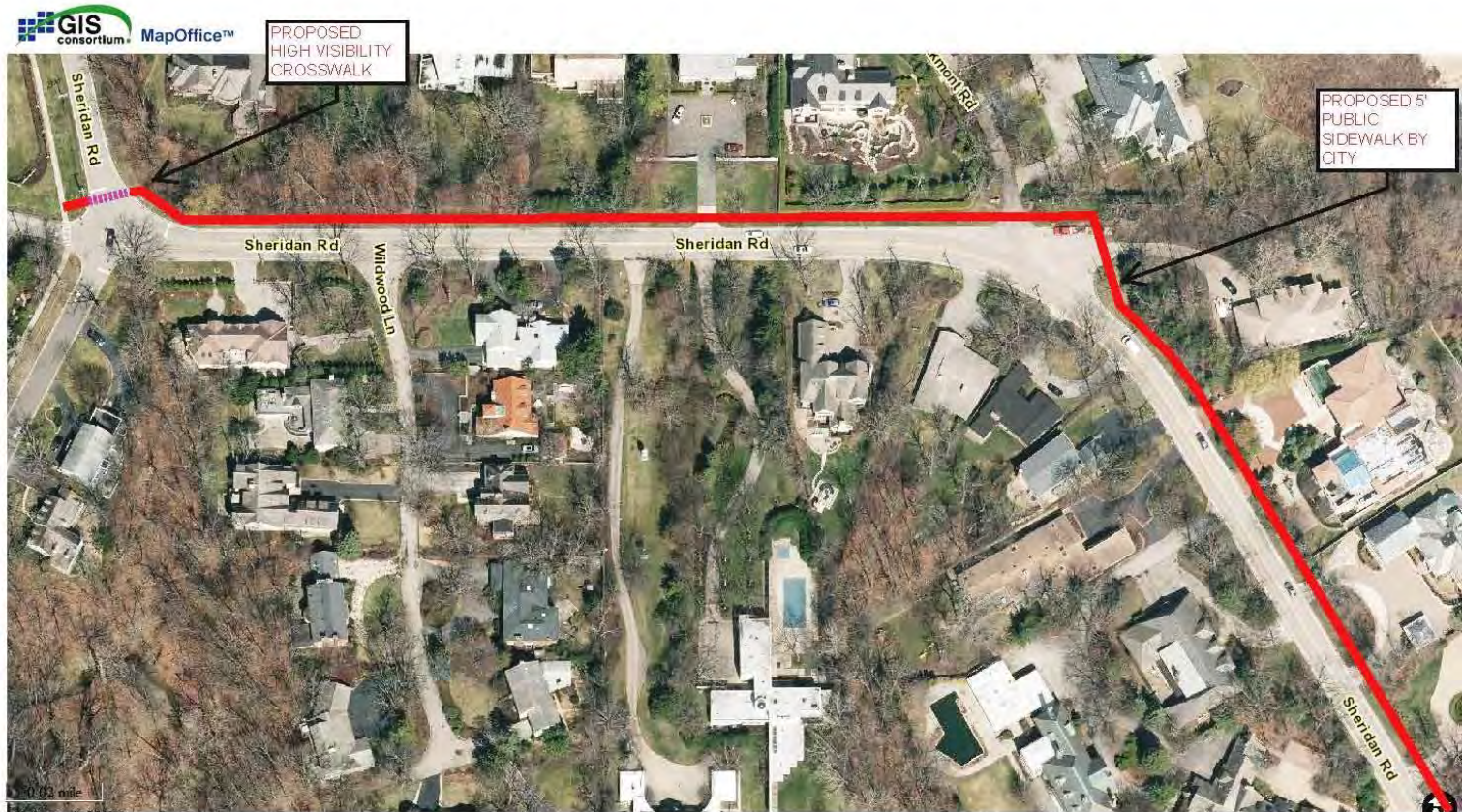


# SHERIDAN ROAD SIDEWALK PROJECT UPDATE



Sidewalk on East Side

# SHERIDAN ROAD SIDEWALK PROJECT UPDATE



Sidewalk on East Side

© 2016 GIS Consortium and MGP, Inc. All Rights Reserved.  
The GIS Consortium and MGP, Inc. are not liable for any use, misuse, modification or disclosure of any map provided under applicable law.  
Disclaimer: This map is for general informational purposes only. Although the information is believed to be generally accurate, errors may exist and the user should independently confirm for accuracy. This map does not constitute a regulatory determination and is not a base for engineering design. A Registered Land Surveyor should be consulted to determine precise location boundaries on the ground.

# SHERIDAN ROAD SIDEWALK PROJECT UPDATE



959 Sheridan Road:



943 Sheridan Road:



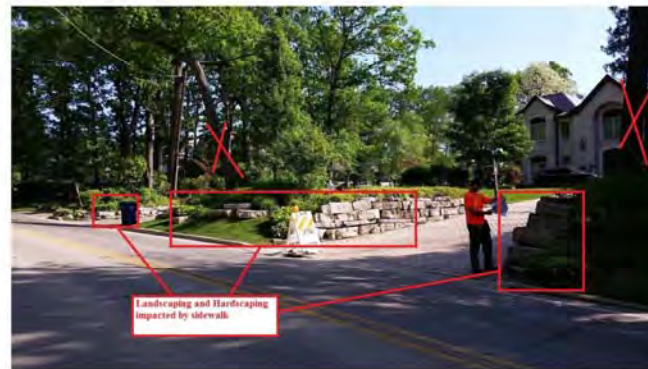
Impacted trees and landscaping at 943 Sheridan Road.

Sidewalk on East Side  
Tree Impacts

# SHERIDAN ROAD SIDEWALK PROJECT UPDATE



933 Sheridan Road:



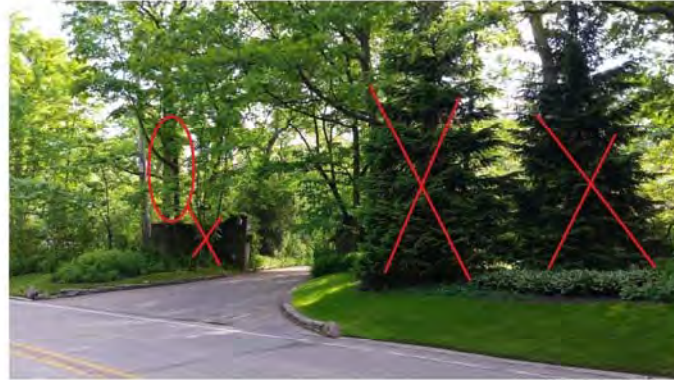
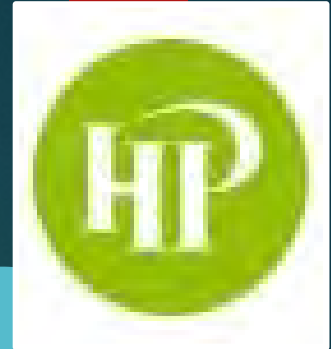
803 and 819 Sheridan Road:



2012 Google street view photo shows how many trees will be removed/impacted by requisite retaining wall adjacent to 777/803 Sheridan Road.

Sidewalk on East Side  
Tree Impacts

# SHERIDAN ROAD SIDEWALK PROJECT UPDATE



2017 photo.

777 Sheridan Road:



2012 Google street view photo shows how many trees will be removed/impacted by requisite retaining wall adjacent to 777/803 Sheridan Road.

Sidewalk on East Side  
Tree Impacts

# SHERIDAN ROAD SIDEWALK PROJECT UPDATE



## Sheridan Road Sidewalk Project Tree Impacts, East Side

Species	Quantity
American Elm	10
Austrian Pine	5
Black Locust	11
Blue Spruce	2
Crabapple	2
Fir	2
Ironwood	1
Linden	8
Magnolia	1
Mulberry	1
Norway Maple	8
Norway Spruce	3
Red Oak	8
River Birch	1
Scotch Pine	2
Shagbark Hickory	2
Sugar Maple	8
Swamp White Oak	1
Sweetgum	2
Turkish Filbert	1
White Oak	21

Sidewalk on East Side  
Tree Impacts

# SHERIDAN ROAD SIDEWALK PROJECT UPDATE

## SUMMARY



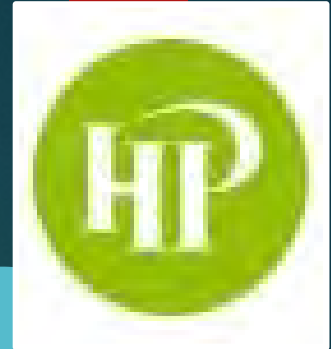
### EAST

- ❑ Continue Sidewalk (East Side)
- ❑ 1 Mid-Block Crosswalk (at Rosewood Beach)
- ❑ Approximate 150 Trees Impacted
- ❑ Lesser Quality of Trees
- ❑ 1 "Heritage" Tree Impact
- ❑ 66 "Key" Trees Removed
- ❑ DBH up to 43"
- ❑ 15 Driveway Aprons Impacted
- ❑ Height of Wall – 1 ft to 8 ft
- ❑ **Est. \$2 Million**

### WEST

- ❑ 2 Mid-Block Crosswalks (at Rosewood Beach & Roger Williams Ave)
- ❑ Approximate 100 Trees Impacted
- ❑ Higher Quality of Trees
- ❑ 2 "Heritage" Tree Impact
- ❑ 54 "Key" Trees Removed
- ❑ DBH up to 64"
- ❑ 18 Driveway Aprons Impacted
- ❑ Height of Wall – 1 ft to 6 ft
- ❑ **Est. \$1.8 Million**

# SHERIDAN ROAD SIDEWALK PROJECT UPDATE

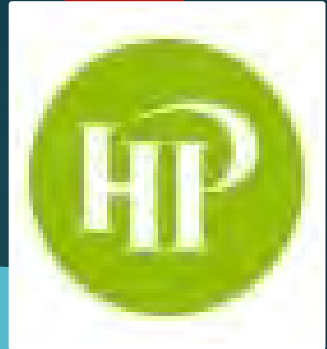


## Jens Jensen Retaining Wall

- ❑ Facade for Aesthetics
- ❑ Concrete Reinforced Wall



# SHERIDAN ROAD SIDEWALK PROJECT UPDATE

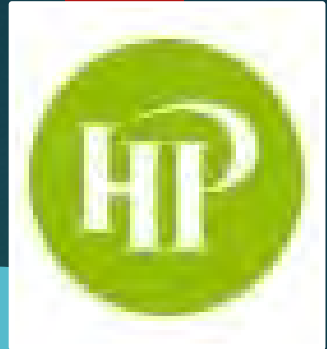


Prior to Construction

© 2015 Google

Google earth

# SHERIDAN ROAD SIDEWALK PROJECT UPDATE



After Construction

Sheridan Rd

Google earth

© 2015 Google  
© 2015 Google

# SHERIDAN ROAD SIDEWALK PROJECT UPDATE

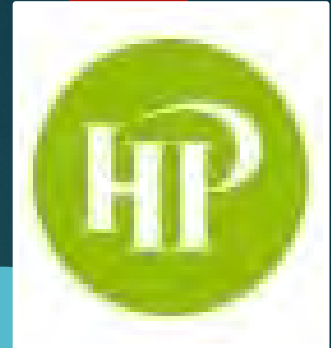
## WAYFINDING SIGNS

### SHERIDAN RD- IDOT JURISDICTION

- ❑ North and South of Roger Williams Ave
  - ❑ "STAIRS TO ROSEWOOD BEACH"

### ROGER WILLIAMS AVE- CITY JURISDICTION

- ❑ East and West of Sheridan Rd
  - ❑ "STAIRS TO ROSEWOOD BEACH"

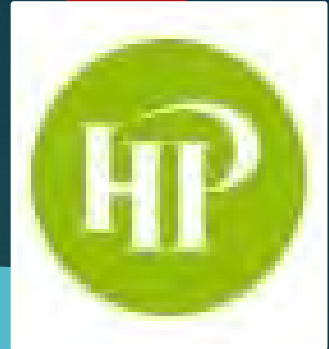


# SHERIDAN ROAD SIDEWALK PROJECT UPDATE



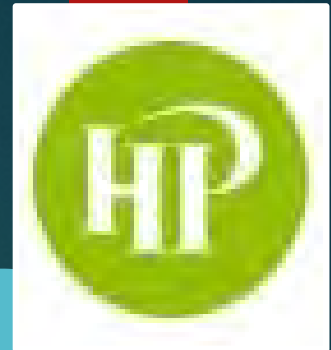
Potential All-Way Stop  
Sheridan Road at Roger Williams

- ❑ Requires IDOT Approval
- ❑ IDOT Rejected in 2013
- ❑ Rosewood Beach Renovated in 2015
- ❑ Resubmittal to IDOT



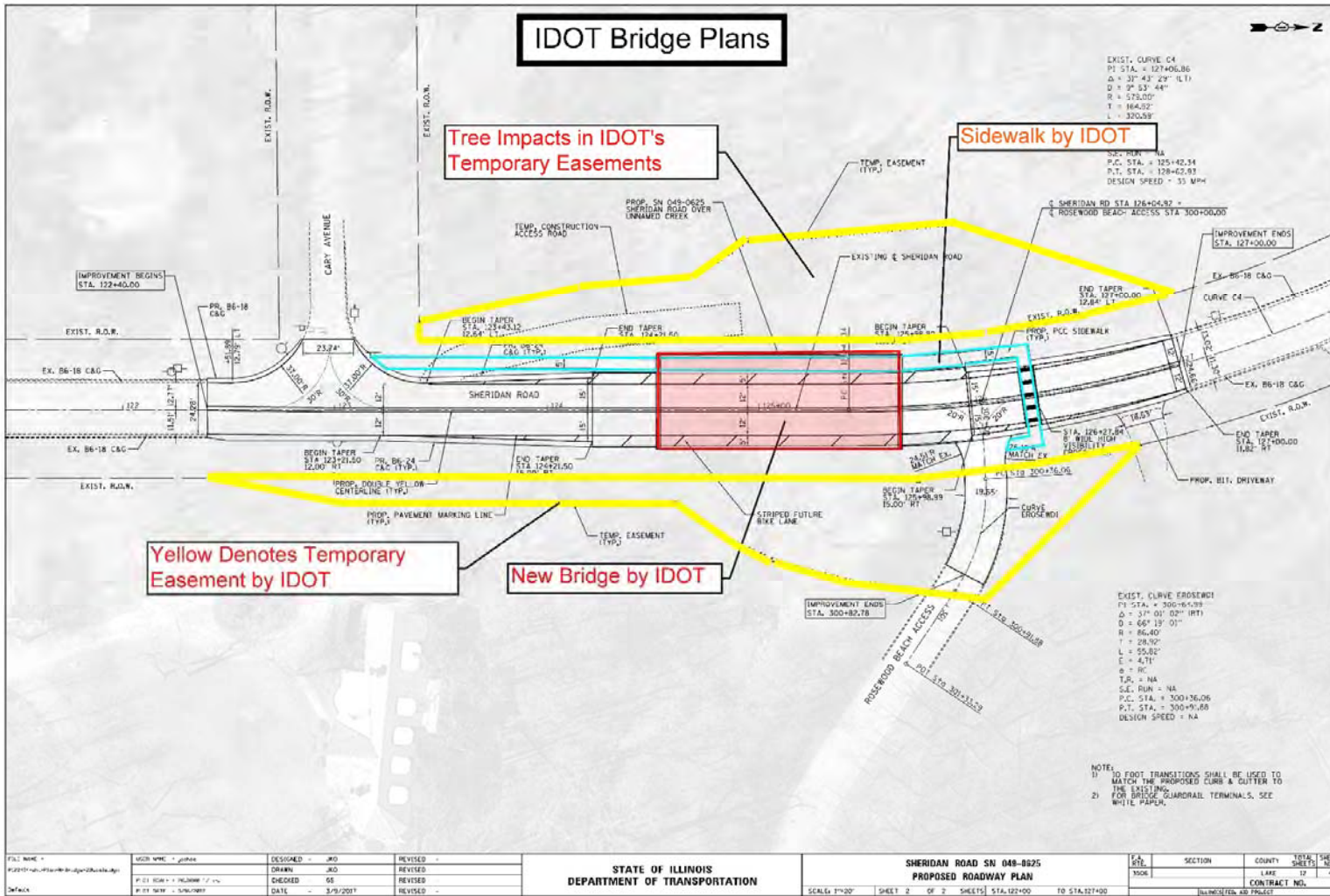
# SHERIDAN ROAD SIDEWALK PROJECT UPDATE

## IDOT PROJECT



- ❑ Replacement of Existing Ravine Storm Culverts on Sheridan Rd
- ❑ Two Locations- By Cary and By Lakewood Pl
- ❑ Two New Bridges Installed
- ❑ Road Profile By Cary Raised By 2 ft – Better Sight Lines
- ❑ Work Entails Seeking Temporary Easements (Private Property)
- ❑ Additional Tree Removal Anticipated (Private Property)
- ❑ 2017- Phase I Preliminary Engineering
- ❑ 2018 – Phase I Continued, maybe Phase II Design Engineering
- ❑ IDOT Contacts Private Properties Directly
- ❑ Construction Schedule Coordination (Ravinia, Rosewood Beach)

# IDOT PROJECT

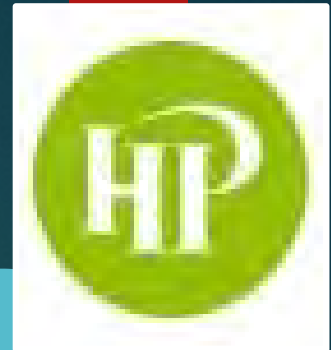


**IDOT**  
**New Bridge & Sidewalk**  
**(Tree Impacts in Temporary Easements)**

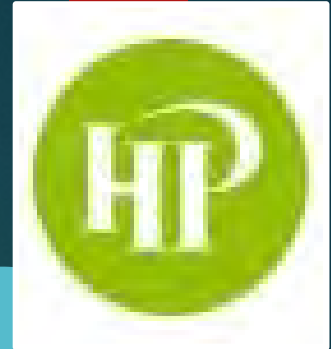
# SHERIDAN ROAD SIDEWALK PROJECT UPDATE

## STAFF RECOMMENDATION

- ❑ Install Sidewalk on East Side
  - ❑ Improved Safety – Better Sight Lines
  - ❑ Continue Sidewalk North of Roger Williams Ave (East Side)
  - ❑ Eliminate Mid-Block Crosswalk (At Roger Williams Ave)
  - ❑ Quality of Trees Removed Minimized (Quantity High)
  - ❑ Less Driveway Apron Conflicts

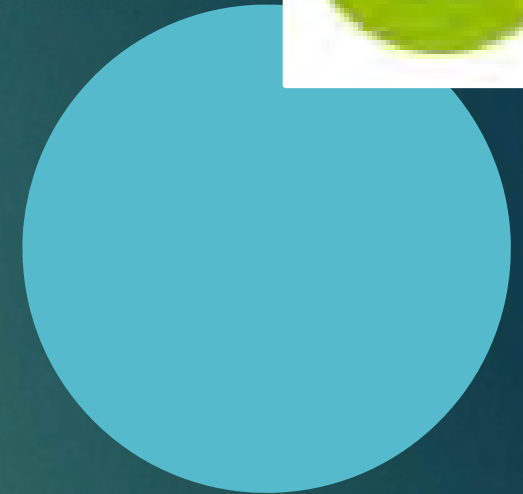


# SHERIDAN ROAD SIDEWALK PROJECT UPDATE



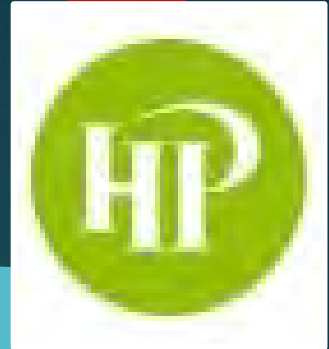
## NEXT STEPS

- ❑ Request IDOT – Sheridan Rd
  - ❑ Wayfinding Signs (Rosewood Beach)
  - ❑ STOP Signs at Roger Williams Ave
- ❑ IDOT Project Schedule





# SHERIDAN ROAD SIDEWALK PROJECT UPDATE



## NEXT STEPS

### Council Feedback

- ❑ Continue Sidewalk Project Design
  - ❑ East Side Recommended (Public Safety)
  - ❑ Concrete Sidewalk and Jen Jensen Wall Design
  - ❑ Seek IDOT Preliminary Approval on Sidewalk
  - ❑ Include in FY 18 5-yr CIP Budget
  - ❑ Coordinate With IDOT Bridge Project

# SHERIDAN ROAD SIDEWALK PROJECT UPDATE

